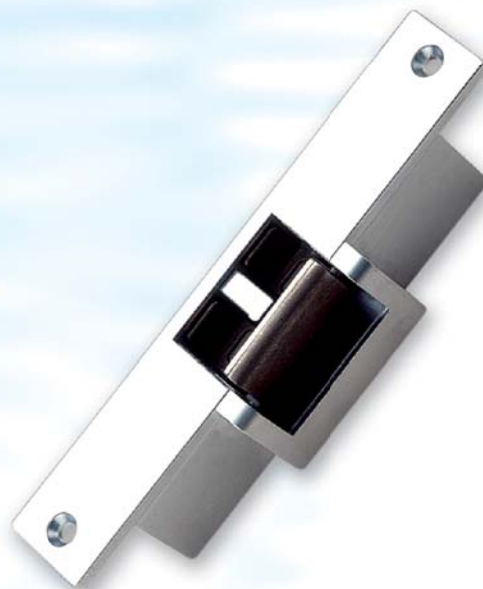


# Low Power Electric strikes



**PGS-701A  
PGS-702A**



**PGS-701B  
PGS-702B  
PGS-703  
PGS-704**

## SPECIFICATIONS

Model No.	PGS-701A	PGS-701B	PGS-702A	PGS-702B	PGS-703	PGS-704	
Lock size L x W x D (mm)	150 x 25 x 32	150 x 25 x 32	150 x 25 x 32	150 x 25 x 32	150 x 25 x 32	150 x 25 x 32	
Approx. weight	410g	410g	410g	410g	410g	410g	
Nominal voltage	DC 12V	DC 12V	DC 12V	DC 12V	DC 12V	DC 12V	
Standby current	0 mA	0 mA	120 mA	120 mA	0 mA	120 mA	
Working current	120 mA	120 mA	0 mA	0 mA	120 mA	0 mA	
Voltage tolerance	±20%	±20%	±20%	±20%	±20%	±20%	
Temp. range	-20°C ~ 70°C	-20°C ~ 70°C	-20°C ~ 70°C	-20°C ~ 70°C	-20°C ~ 70°C	-20°C ~ 70°C	
Power consumption	1.5W	1.5W	1.5W	1.5W	1.5W	1.5W	
Features	*Fail secured type (Released as energized) *Could be continuously energized. *For heavy duty door. *With door monitoring switch.	*Fail secured type (Released as energized) *Could be continuously energized. *For heavy duty door. *With door monitoring switch.	*Fail safe type (Released as energized) *Could be continuously energized. *For heavy duty door. *With door monitoring switch.	*Fail safe type (Released as energized) *Could be continuously energized. *For heavy duty door. *With door monitoring switch.	*Fail safe type (Released as energized) *Could be continuously energized. *For heavy duty door. *With door monitoring switch.	*Fail secured type (Released as energized) *Could be continuously energized. *For heavy duty door. *With door monitoring switch.	*Fail safe type (Released as energized) *Could be continuously energized. *For heavy duty door. *With door monitoring switch.
Operation	Pair with MK-338 square type dead bolt mechanical lock.	Pair with MK-338 square type dead bolt mechanical lock.	Pair with MK-338 square type dead bolt mechanical lock.	Pair with MK-338 square type dead bolt mechanical lock.	Pair with MK-738 mortise type dead bolt mechanical lock & cylindrical lock.	Pair with MK-738 mortise type dead bolt mechanical lock & cylindrical lock.	
Applications	For aluminum steel or wooden door, brass door.	For aluminum steel or wooden door, brass door.	For aluminum steel or wooden door, brass door.	For aluminum steel or wooden door, brass door.	For aluminum steel or wooden door, brass door.	For aluminum steel or wooden door, brass door.	